

# CERTIFICATE OF LOCATION OF GOVERNMENT CORNER

EAST 1/4 \_\_\_\_\_ Corner of Section 20, Township 105, Range 42, 5TH P.M.

STATE OF MINNESOTA, County of MURRAY

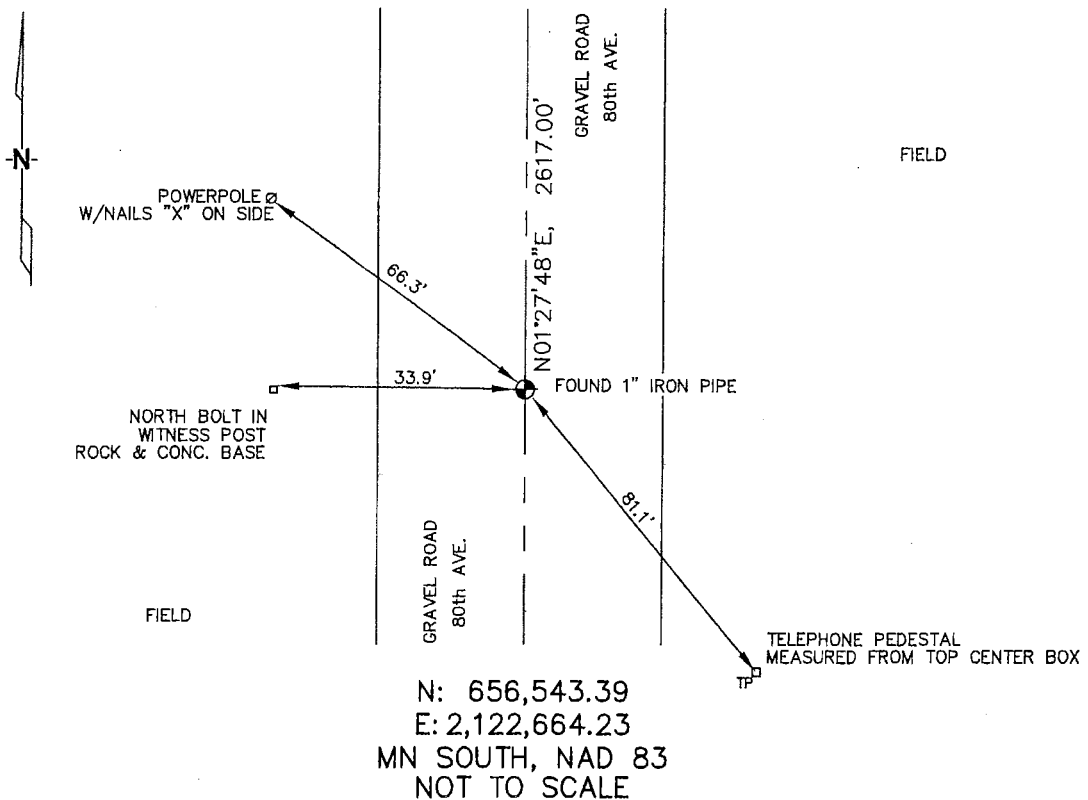
At the corner location shown on the sketch :

On 3/13/2006 found 1" IRON PIPE.

left monument as found,  lowered monument,  removed monument (explain)

On \_\_\_\_\_ set \_\_\_\_\_

### Sketch of reference ties



Statement of evidence relative to this corner location is on back page

I hereby certify that this document and the data contained herein was prepared by me or under my direct supervision.

Thomas V. Jeff 6/29/06  
 Thomas V. Jeff Date  
 Registration No. 44563

- Land Surveyor,  Professional Engineer  
 County Surveyor,  County Engineer

### OFFICE OF THE COUNTY RECORDER

County of \_\_\_\_\_

**SEP 28 2006**

I hereby certify that this document was filed in the Co. Recorders office at \_\_\_\_\_ .M. on the \_\_\_\_\_ day of \_\_\_\_\_ A.D. , 20

County Recorder James V. Johnson  
 By \_\_\_\_\_, Deputy

DOCUMENT NO. \_\_\_\_\_

STATEMENT OF EVIDENCE:

EAST 1/4 CORNER, SECTION 20, T. 105 N., R. 42 W.,  
MURRAY COUNTY, MINNESOTA

- 1861 D.W. Wellman & S.S. Smoot, US. Deputy Surveyors,  
monumented corner.
- 4/2/1999 Zieske Land Surveying, Inc., Perry Zieske, RLS. set a 1" iron pipe on  
corner. Tie: W-2662.73' to center of section.
- 3/13/2006 Ulteig Engineers, Inc., Survey Crew, Brain Payne Party Chief,  
found a 1" iron pipe in the road.  
Ties: NW-66.3' to nailed "X" on power pole"  
W-33.9' to N bolt in witness post with rock & concrete base;  
SE-81.1' to top, center, telephone pedestal;  
N-2617.00' to NE corner, Section 20;